

TEAM BLOOD BLOOD
PRESENTS:

SECRETS OF THE SEA

JOURNEY TO THE LOST
THE JEWELS

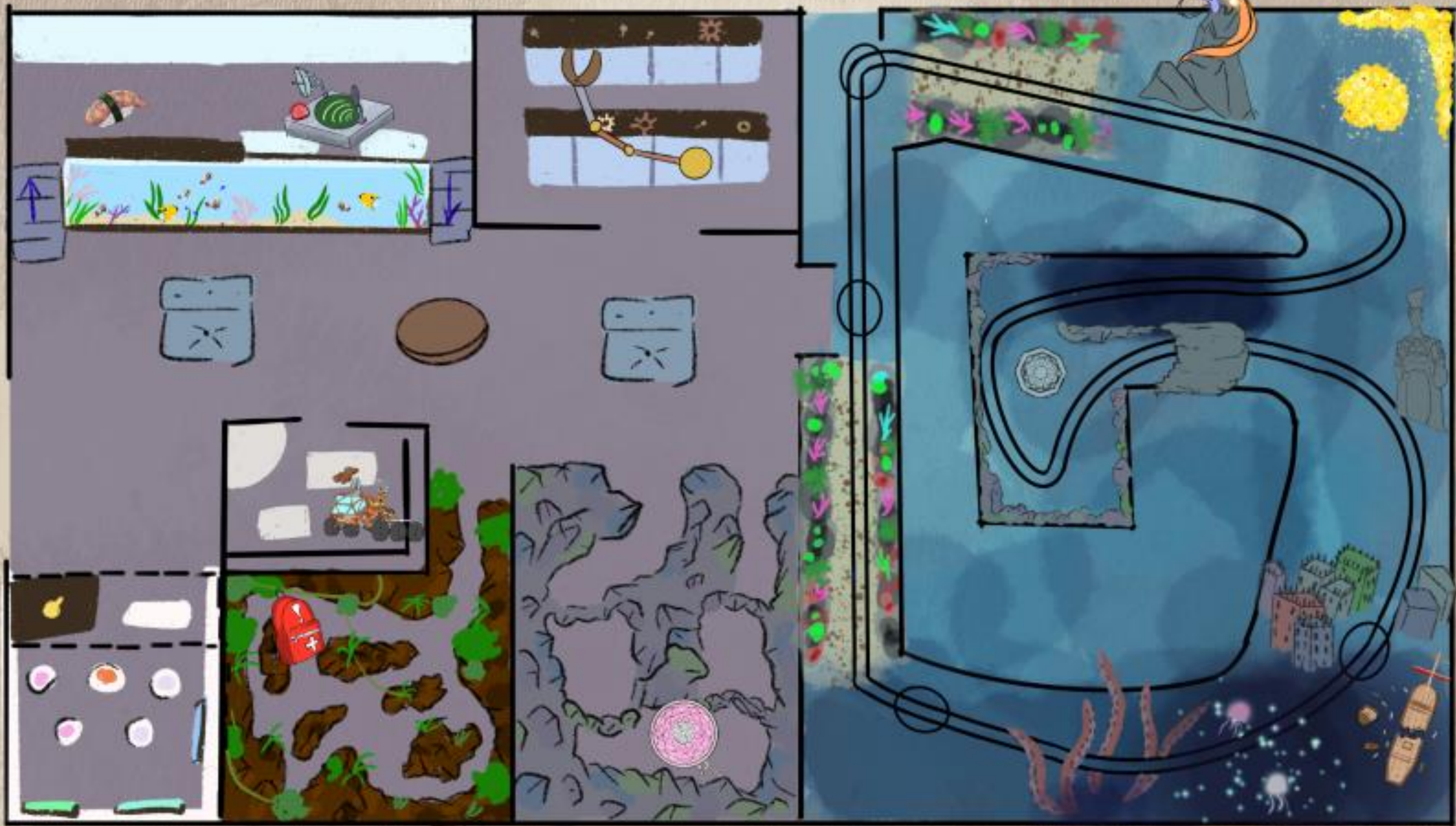
ERIN COMPTON
ZINAN LIU
MICA PELEG
ALEX SZABO

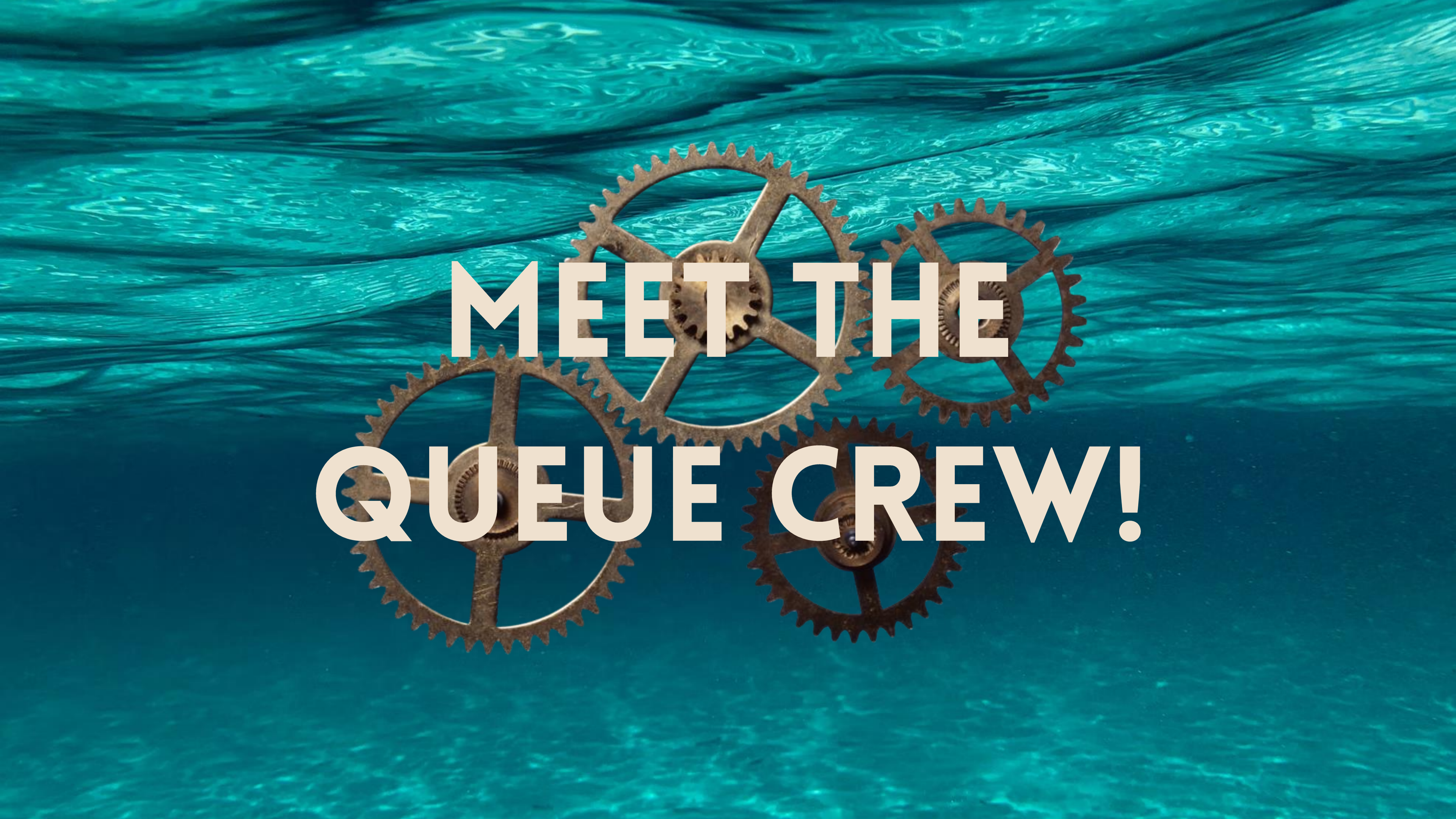
LOGLINE

**JOIN A TURN-OF-THE-CENTURY RESEARCH EXPEDITION
AND JOURNEY DEEP BENEATH THE WAVES TO RETRIEVE
KANJU AND MANJU – LEGENDARY JEWELS SAID TO
CONTROL THE SEA ITSELF! READY YOURSELF FOR YOUR
EXPEDITION AHEAD OF TIME, AND YOU WILL BE
REWARDED...**



QUEUE



The background of the image is a deep blue, rippling underwater scene. In the center, there is a complex arrangement of several interlocking metal gears. The gears are a dark, rusty brown color, suggesting they are old or submerged in water. They are of various sizes and are positioned in a way that they appear to be part of a larger, hidden mechanism. The lighting is soft, coming from above, creating a sense of depth and mystery.

**MEET THE
QUEUE CREW!**

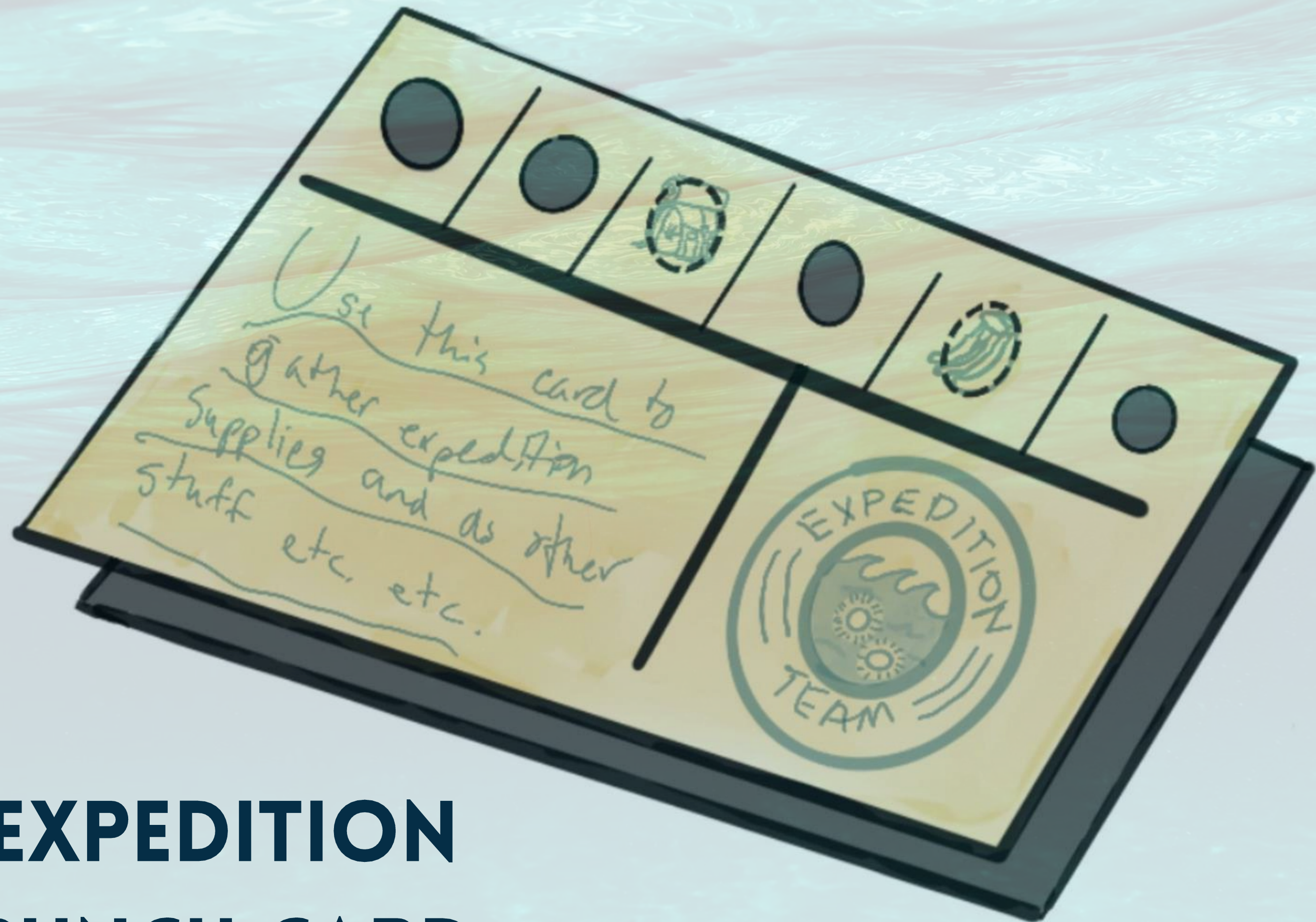




The background of the image is a deep blue, rippling underwater scene. In the center, there are four large, rusty, mechanical gears of different sizes, some of which are interlocked. The gears have a weathered, brownish-orange patina. The text 'QUEUE EXPLORATIONS' is superimposed over the center of the image, in a bold, white, sans-serif font.

QUEUE EXPLORATIONS

EXPEDITION PUNCH CARD

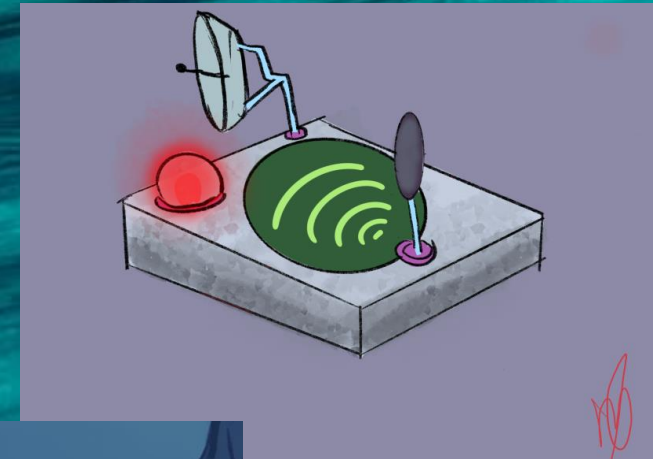


SUPPLIES

- SEA CREATURE BAIT



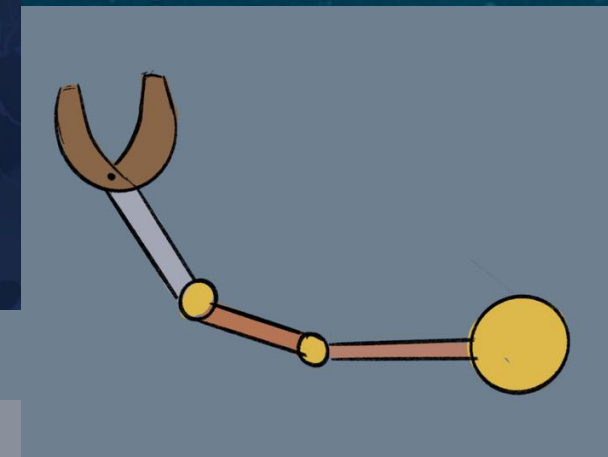
- SEA CREATURE COMMUNICATION SYSTEM



- ROV COMPANION



- MECHANICAL ARM



- EMERGENCY SUPPLIES



- MAGIC AMULET

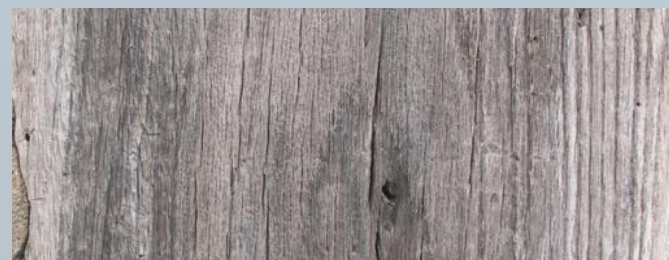


FISHING DECK

EQUIPMENT: SEA CREATURE BAIT

OBJECTIVE: CATCH THE MOST FISH

**ACTIVITY: COMPETITIVE FISHING
EXPERIENCE**

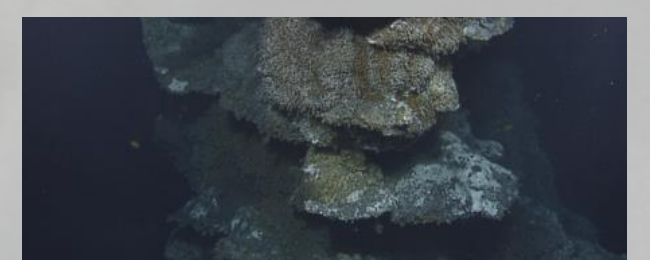
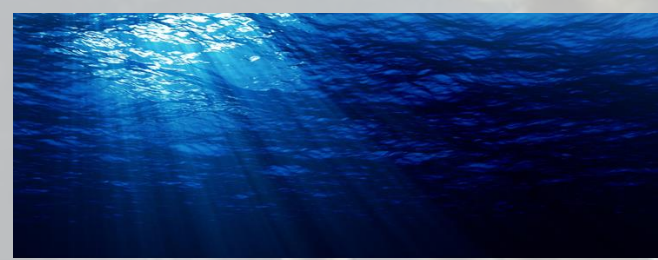
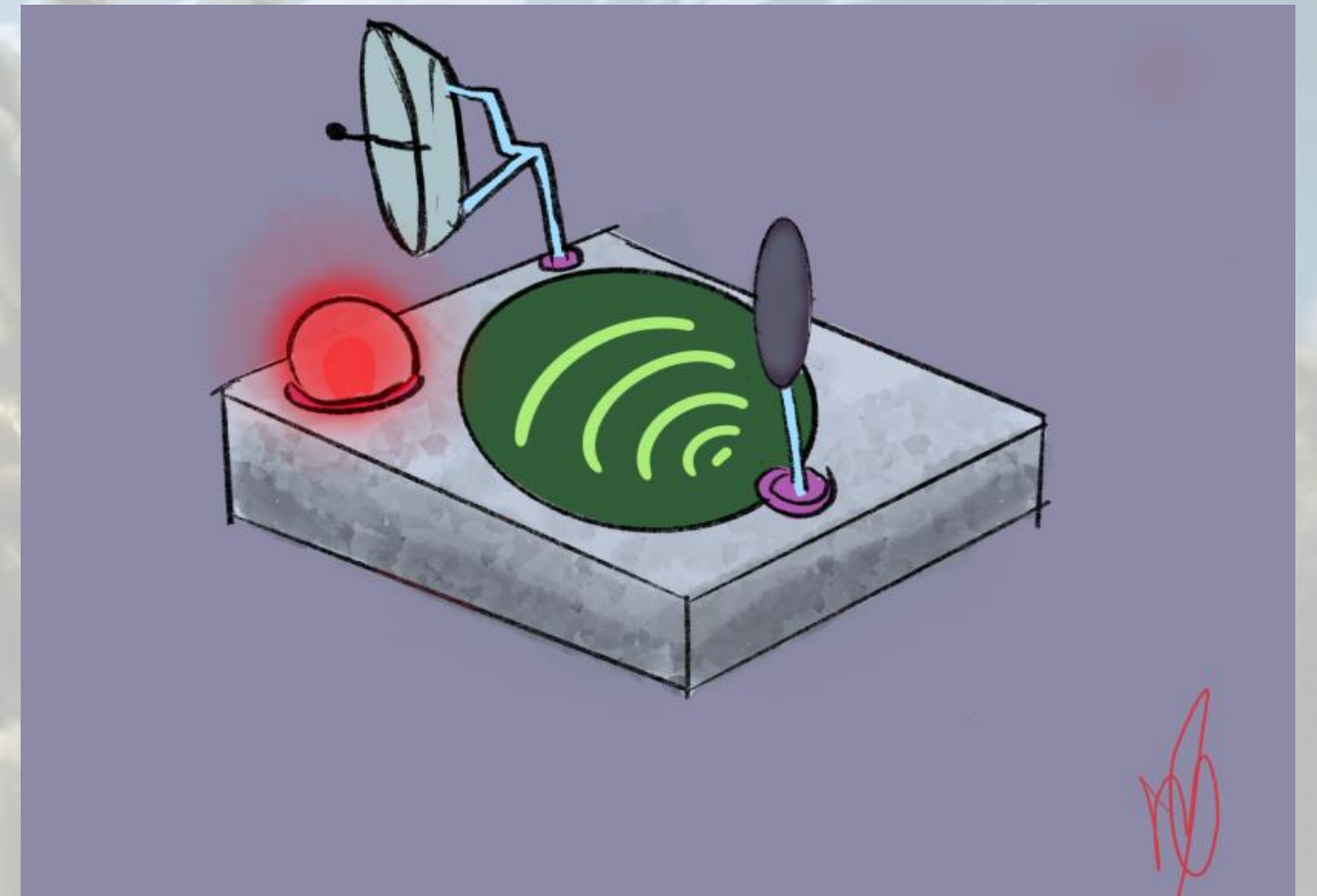


SEA LAB

**EQUIPMENT: SEA CREATURE
COMMUNICATION SYSTEM**

**OBJECTIVE: DECIPHER THE SECRET
LANGUAGE OF THE SEA**

**ACTIVITY: TALK WITH FISH IN AN
INTERACTIVE AQUARIUM**

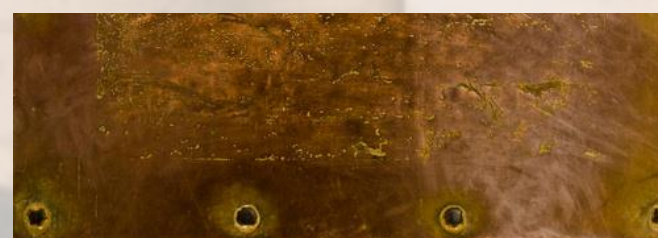
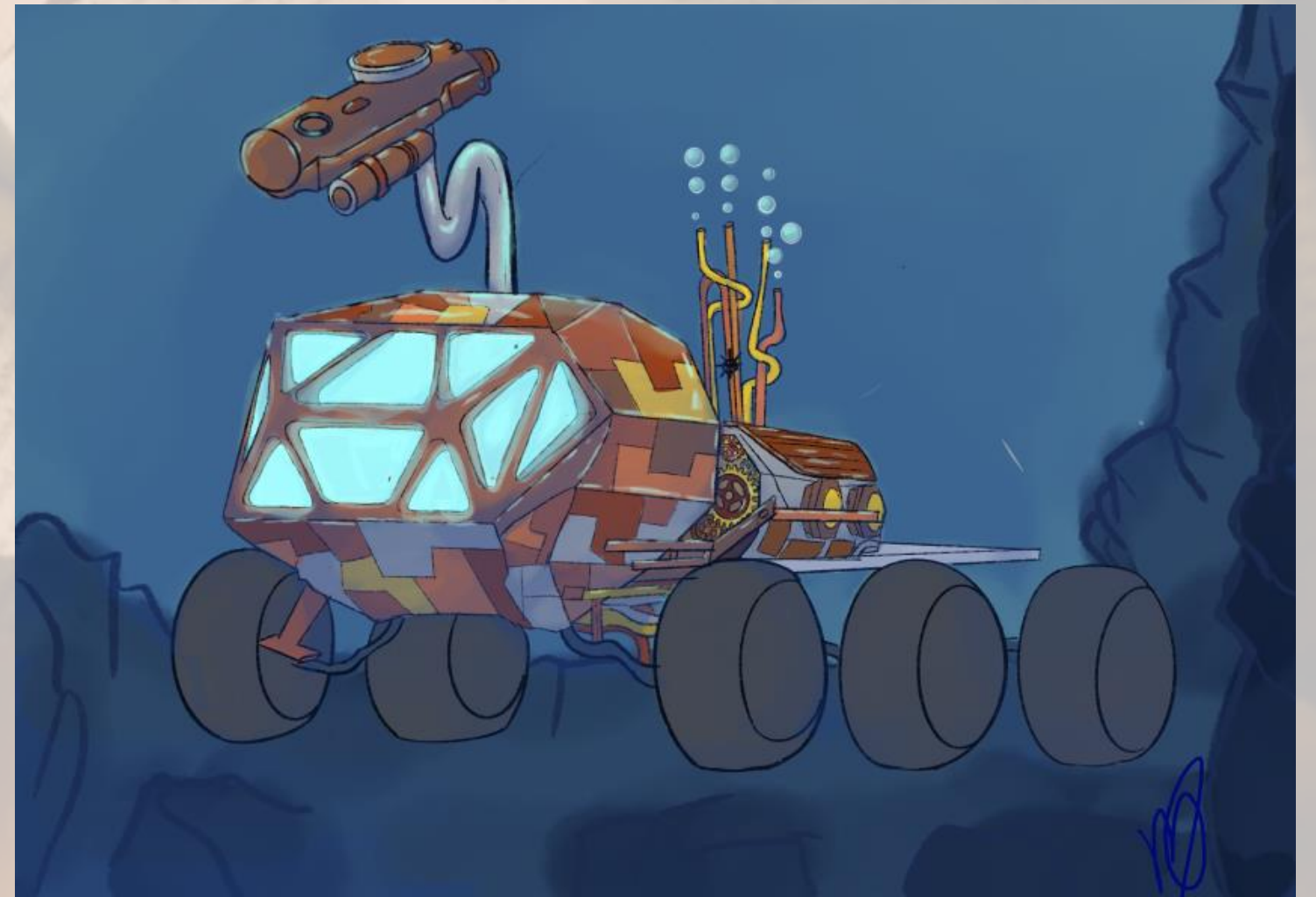


RESEARCH OFFICE

EQUIPMENT: ROV COMPANION

OBJECTIVE: REVEAL CODE WORD

**ACTIVITY: CO-OP ESCAPE
ROOM**

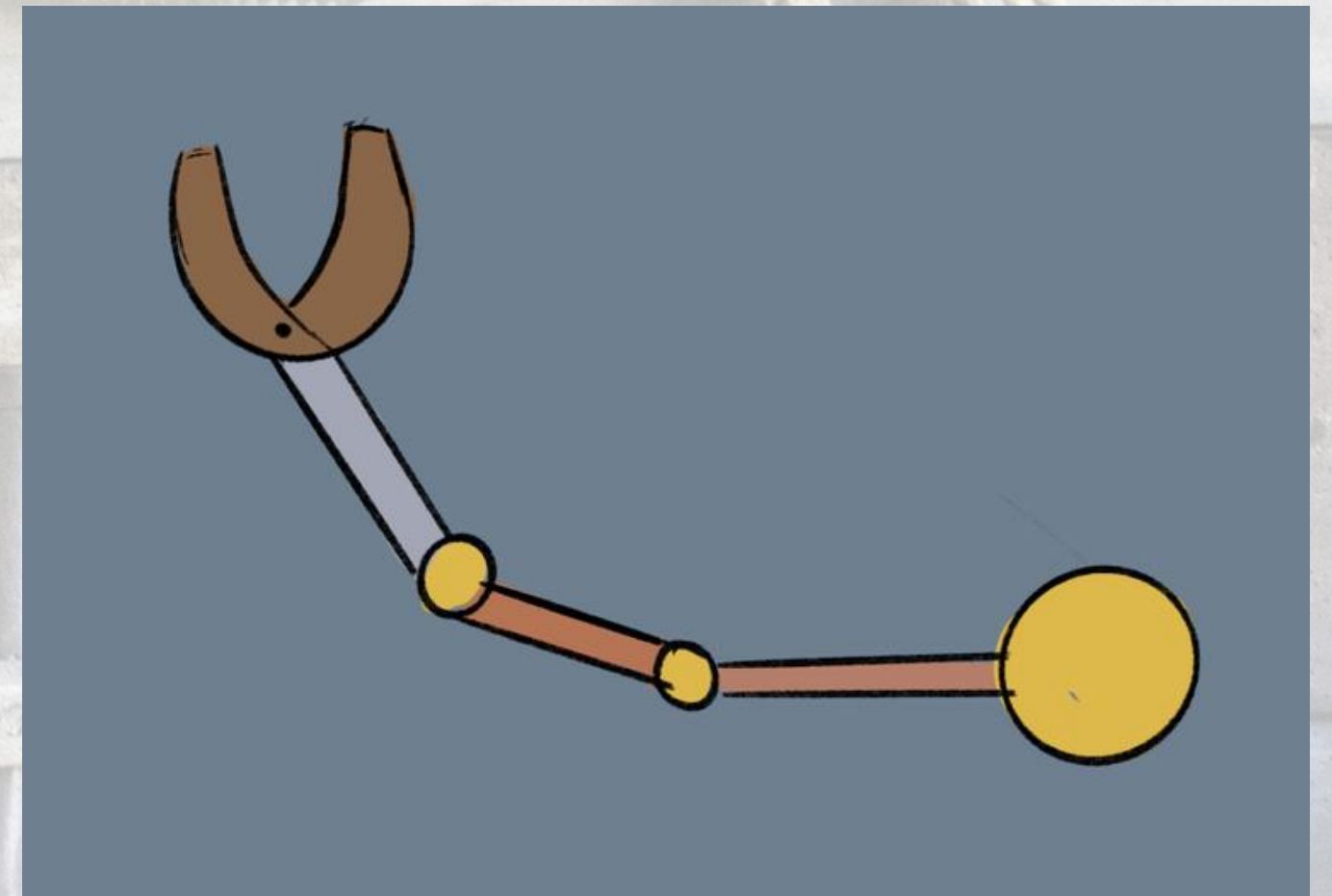


MECHANIST'S WORKSHOP

EQUIPMENT: MECHANICAL ARM

OBJECTIVE: COMPLETE THE ARM

ACTIVITY: CO-OP TEAM ASSEMBLY

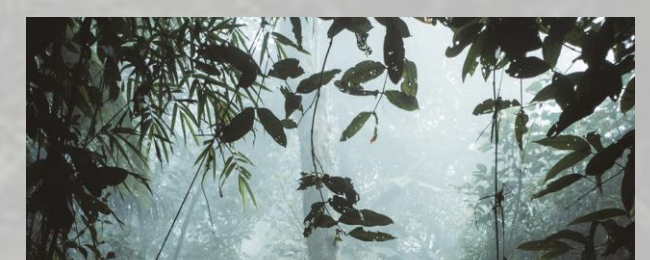


JUNGLE PATH

EQUIPMENT: EMERGENCY SUPPLIES

**OBJECTIVE: FIND THE LOST
SUPPLIES**

ACTIVITY: SCAVENGER HUNT



SECRET COVE

EQUIPMENT: MAGIC AMULET

OBJECTIVE: REACH FINAL CHAMBER

ACTIVITY: SOLVE THE RIDDLES

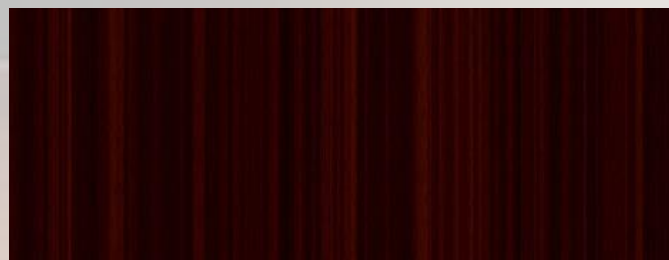


GALLERY OF GLORY

EQUIPMENT: NONE

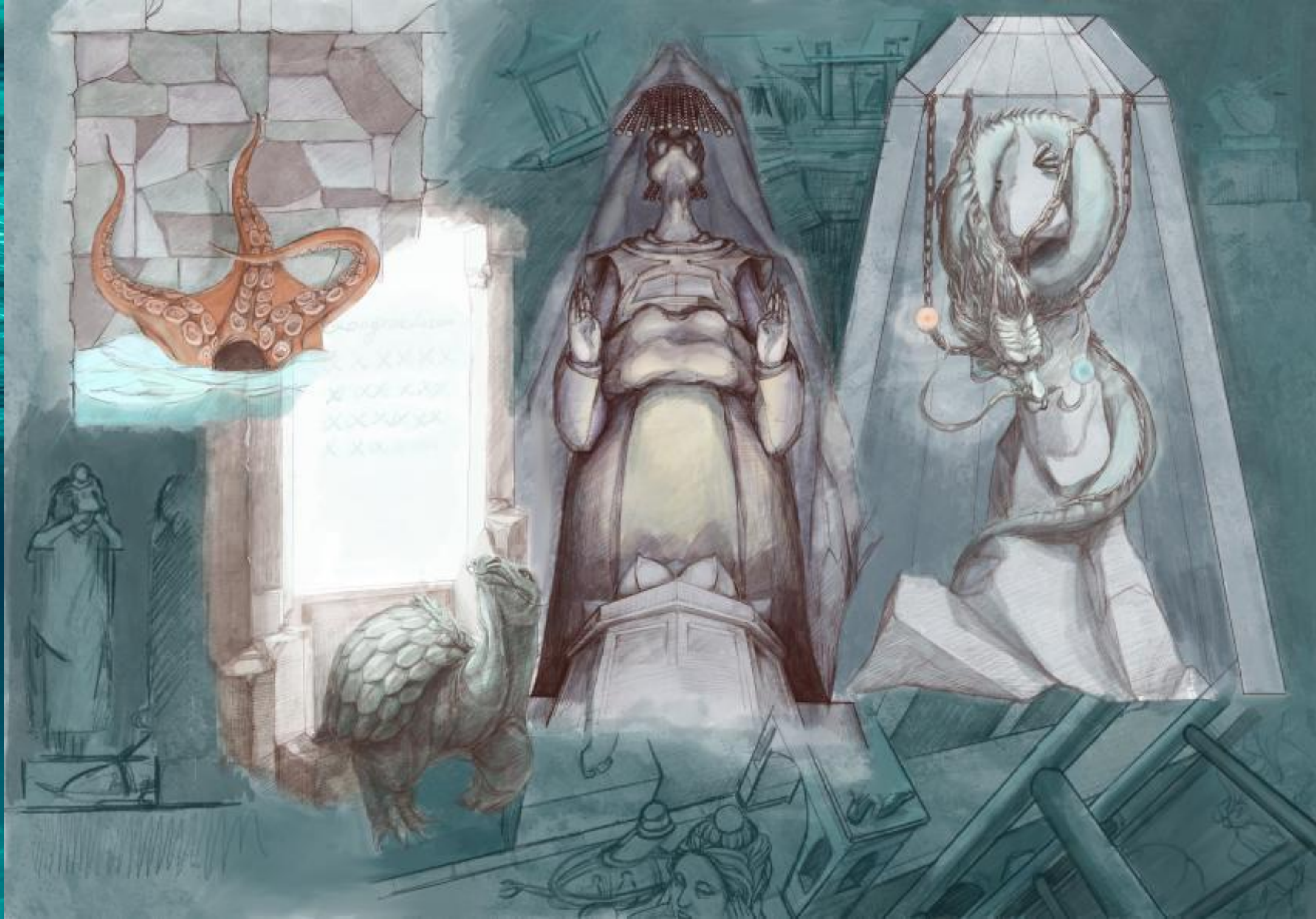
OBJECTIVE: LEARN ABOUT RESEARCH TEAM

ACTIVITY: PASSIVE EXPLORATION





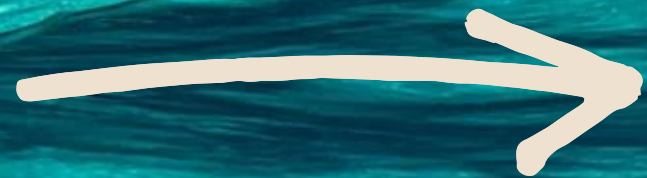
RIDE



STORY MAP

A cluster of four interlocking brass gears is positioned in the upper left corner of the image, partially overlapping the title text.

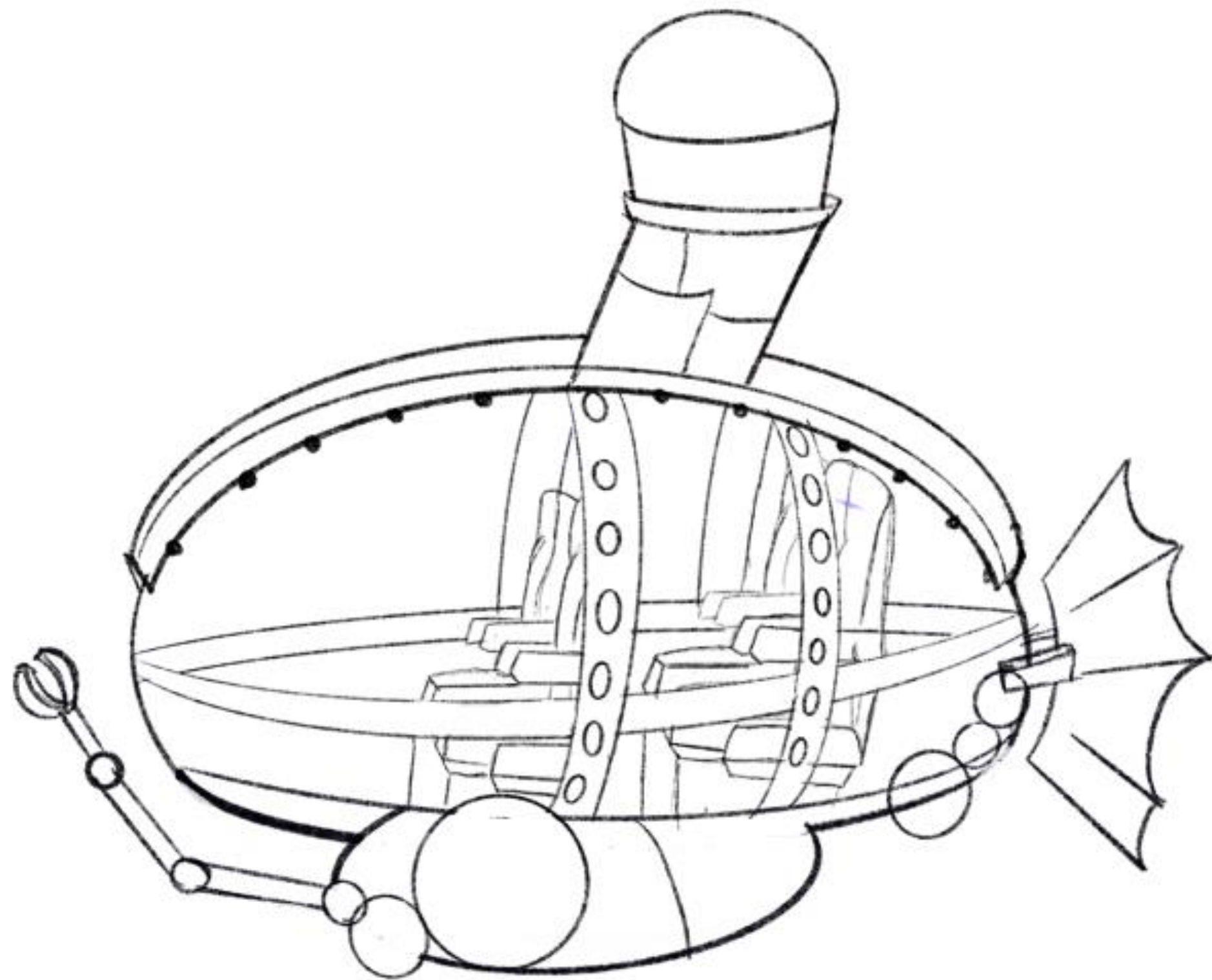
SUB STATION

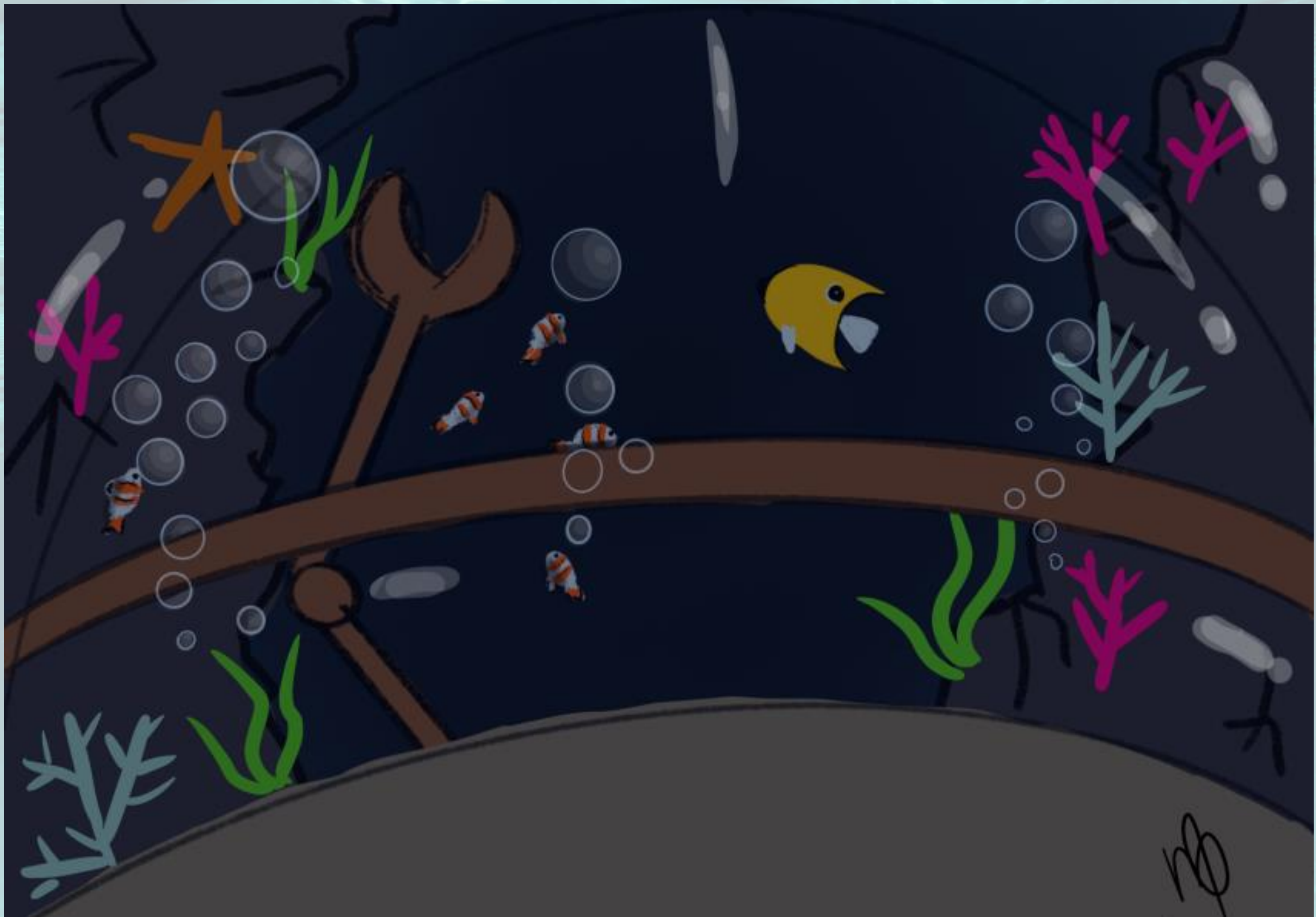


SUPPLY
DOCK



COASTAL REEFS





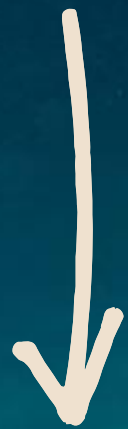


STORY MAP

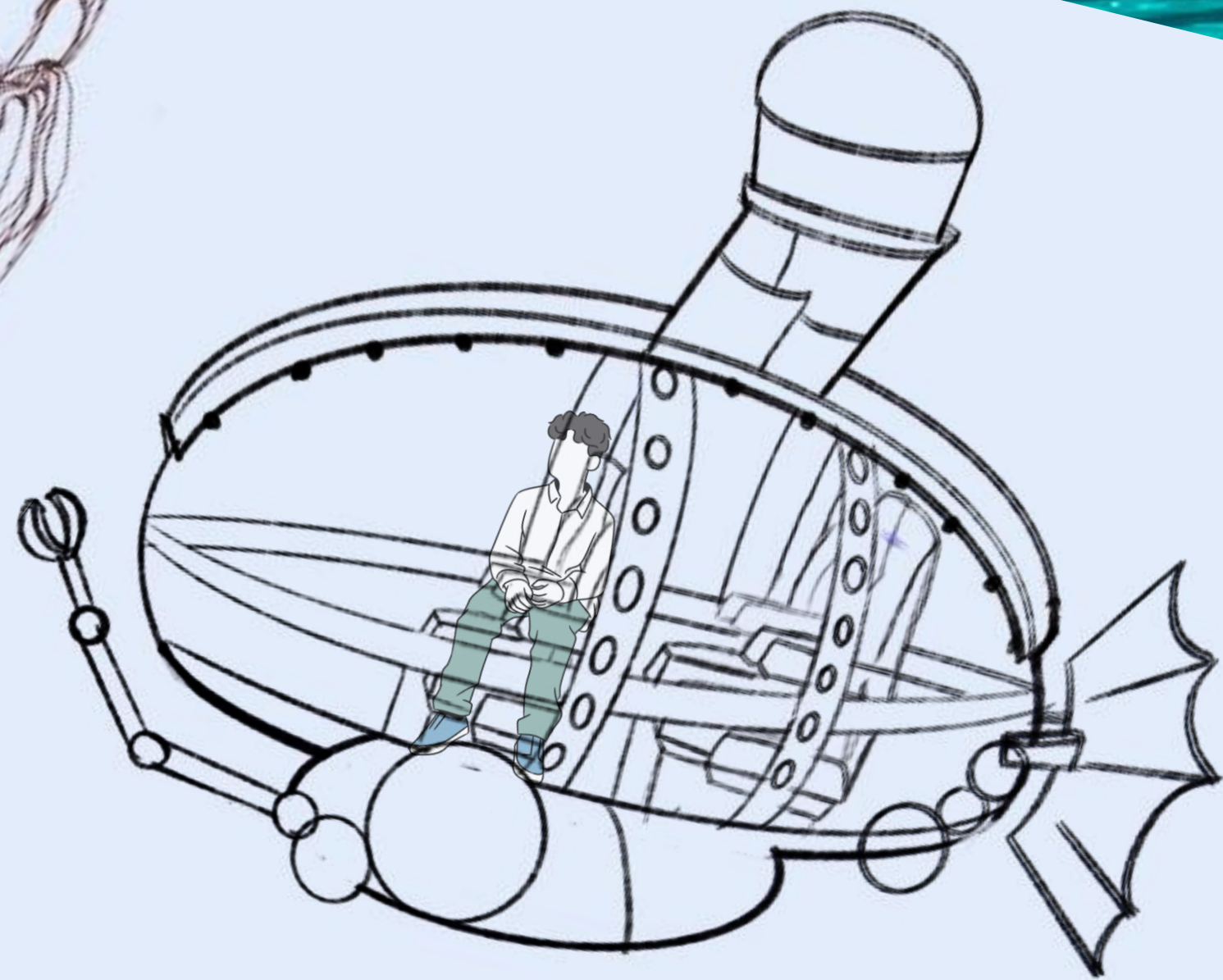
COASTAL REEFS



OPEN OCEAN



DROP OFF



STORY MAP

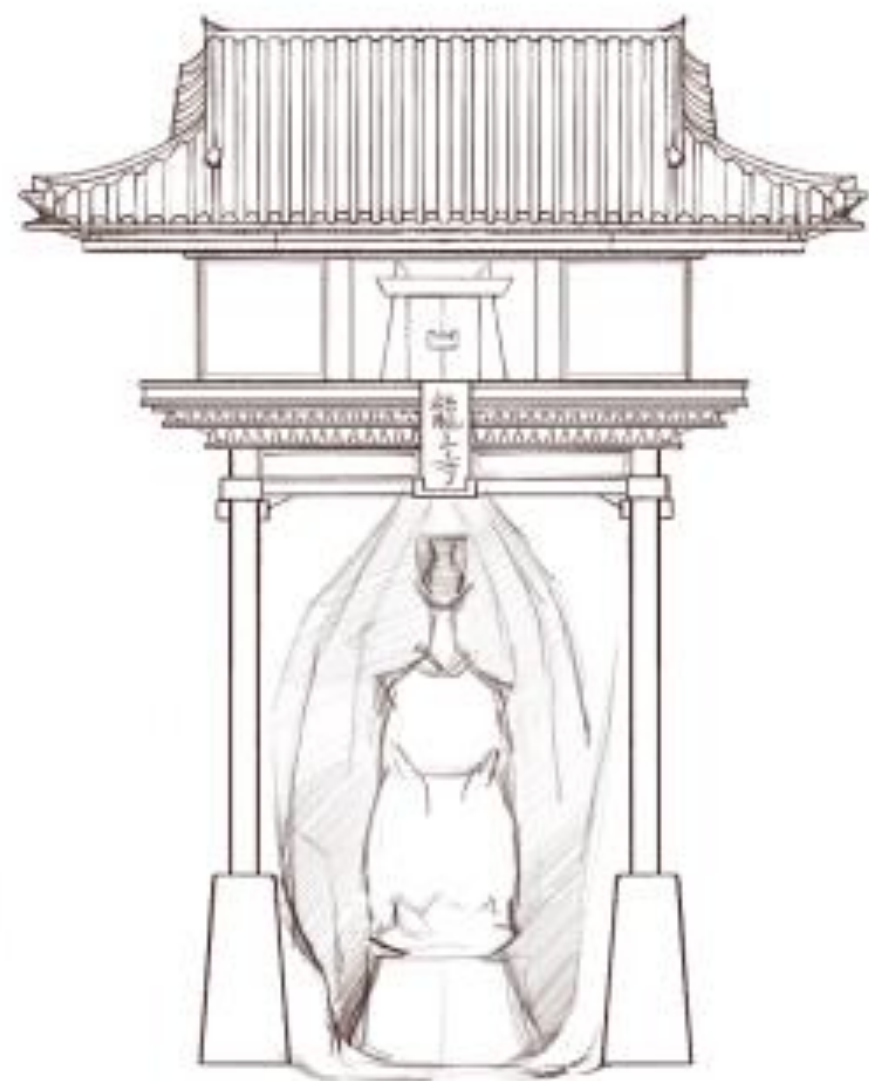
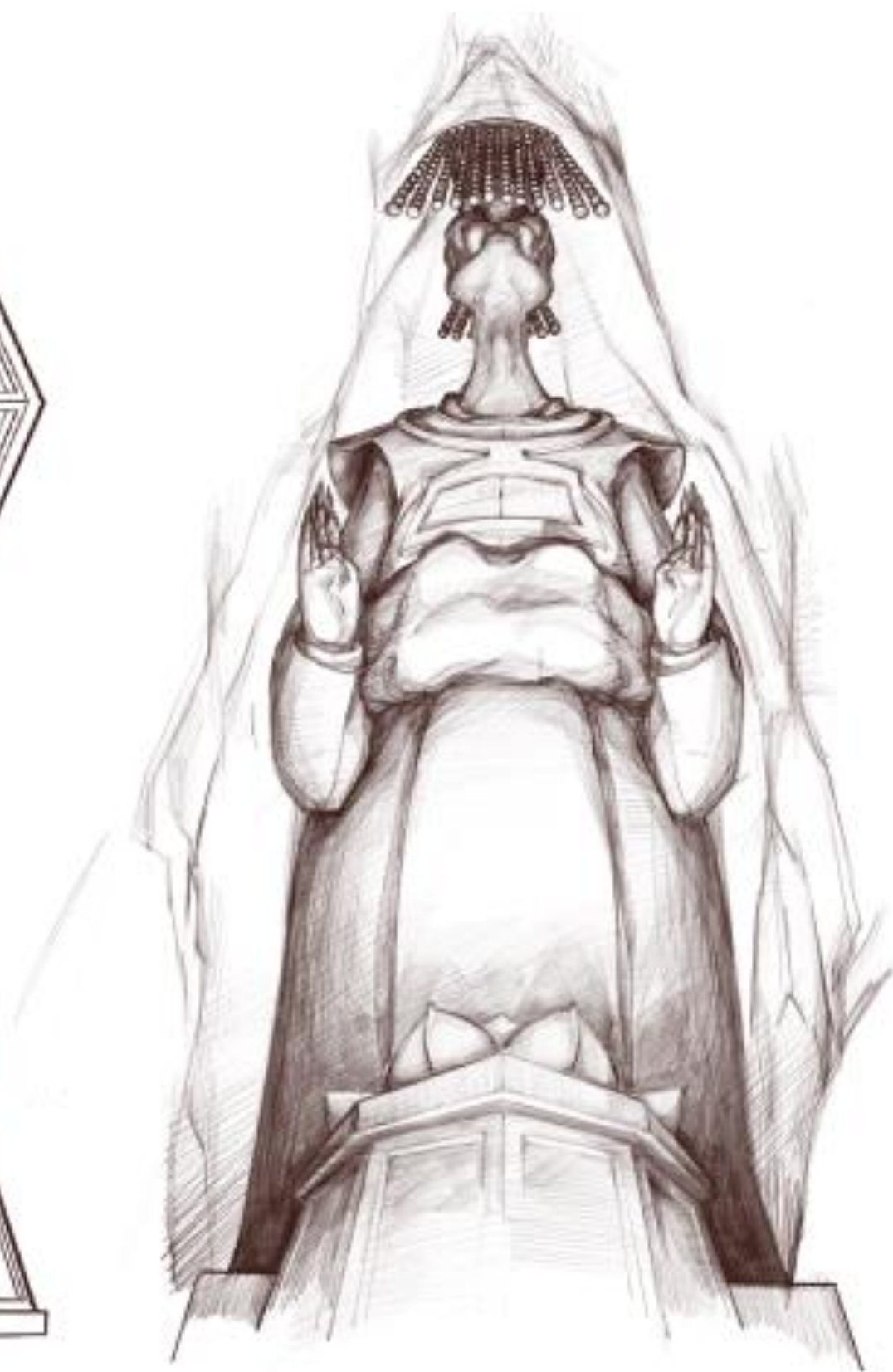
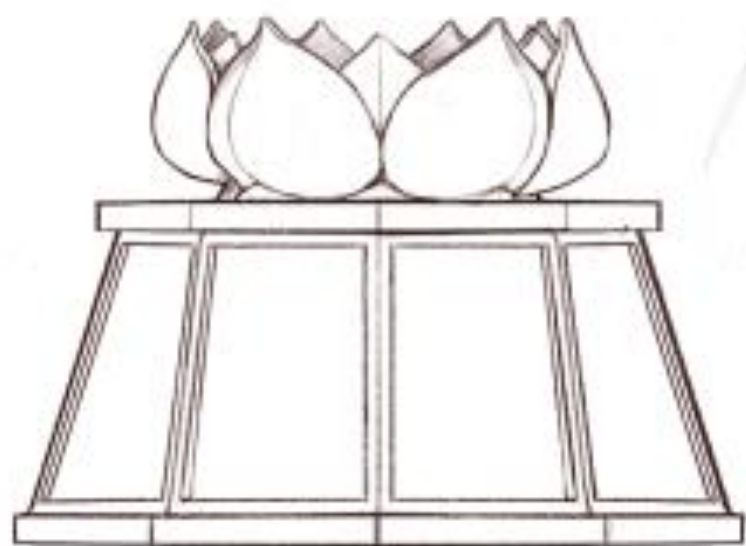
A cluster of four interlocking brass gears of various sizes, positioned in the upper left corner of the image.

DROP OFF

SUNKEN CITY

LUMINOUS CAVERNS

TEMPLE GATES



STORY MAP

A cluster of four interlocking brass gears of different sizes, positioned behind the title text.

TEMPLE GATES

ANTECHAMBERS

BLACKOUT ROOM



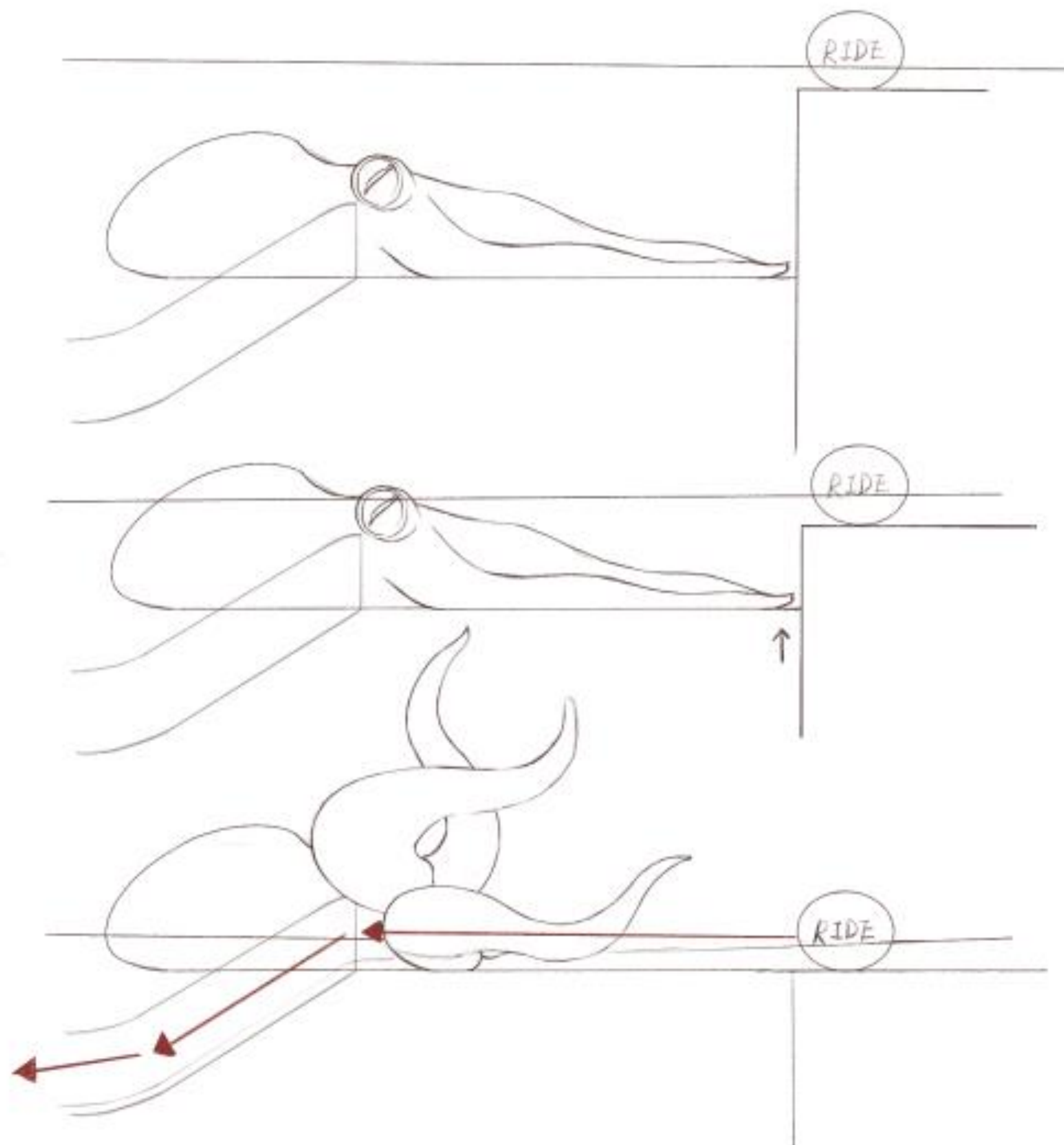
STORY MAP

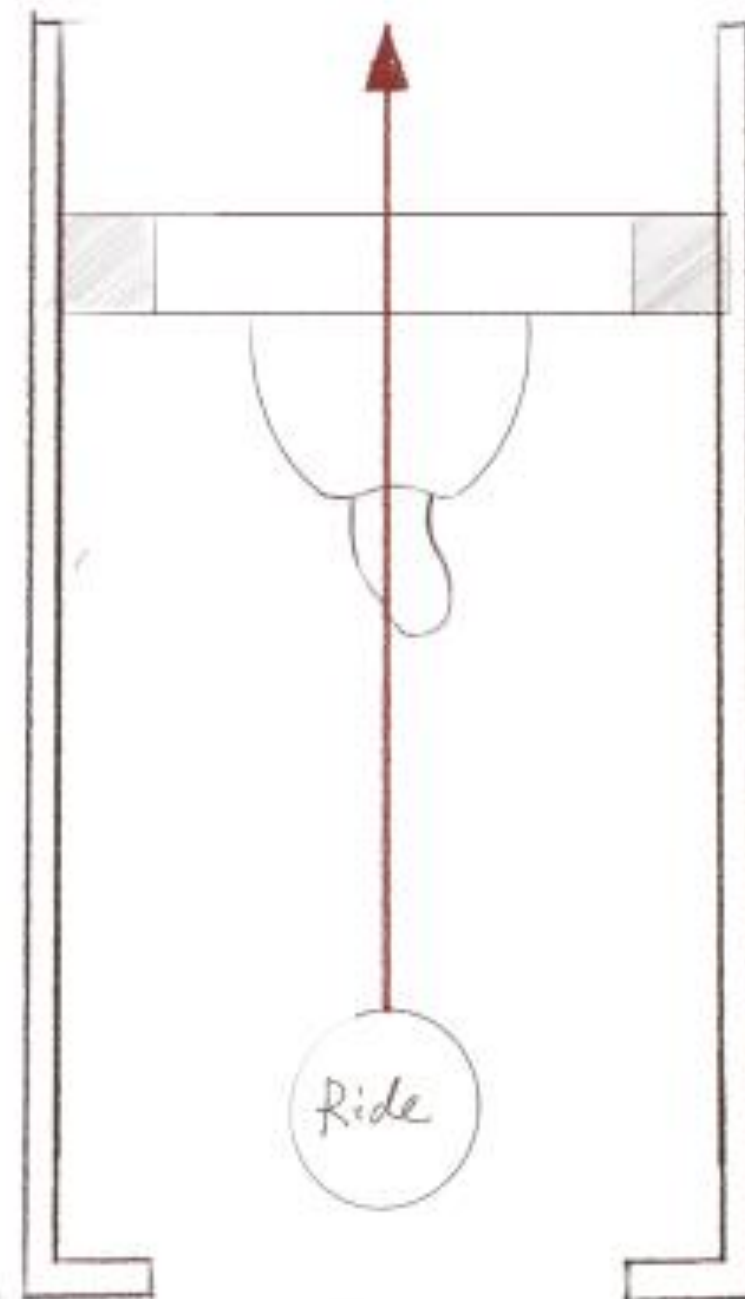
A cluster of four interlocking brass gears of different sizes, positioned in the upper left corner of the image.

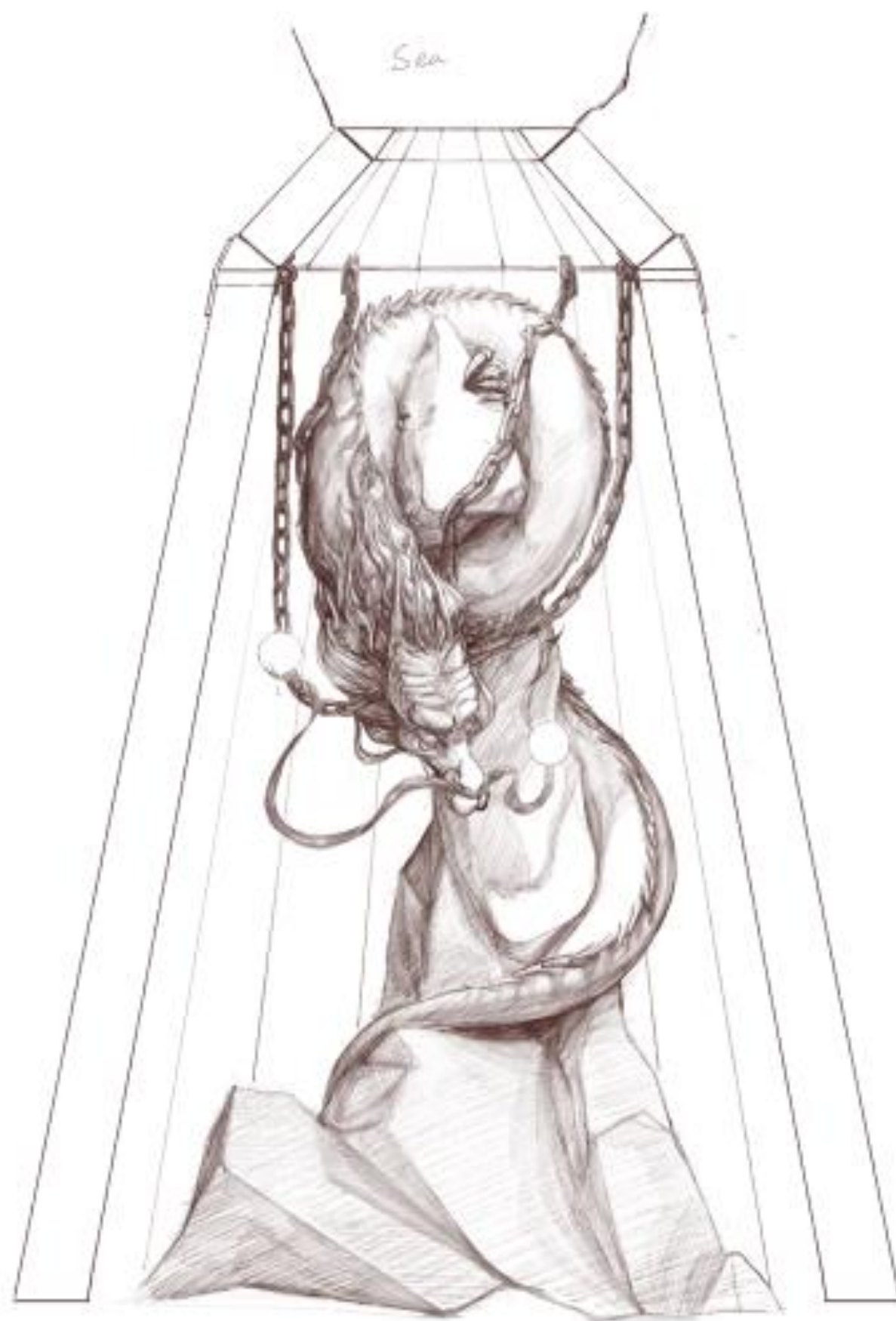
BLACKOUT ROOM



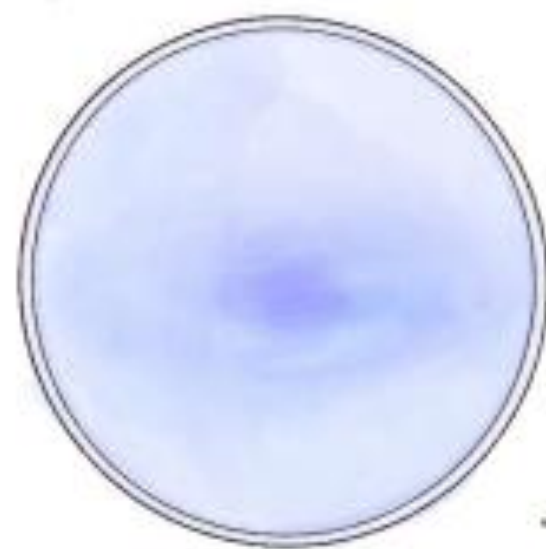
TREASURE CHAMBER







Kanju

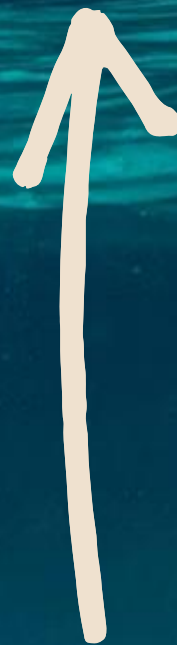


Manju

STORY MAP



UNLOAD STATION



TREASURE CHAMBER



MERC

H



Handwritten signature or initials.



THANK YOU!